

MEDIACOM

HDD DUPLICATOR



MANUALE D'USO
M-HD2BAYU3

WWW.MEDIACOMEUROPE.IT

Modifiche

Le informazioni contenute in questo manual sono puramente indicative e soggette a variazioni senza preavviso sebbene tutta la cura ed attenzione siano state profuse al fine di rendere questo manuale accurato e preciso. Nessuna responsabilità derivante da errori o omissioni in questo manuale può essere imputata a MEDIACOM come pure l'uso inappropriato potrà esserle imputato.

MEDIACOM si riserva la facoltà di apportare modifiche al prodotto o al suo design senza preavviso.

Responsabilità

La riproduzione di questo manuale è proibita. La eventuale copia dovrà essere preventivamente approvata da Datamatic S.p.A.

Prerequisiti di sistema:

Processore Intel Pentium II 350 MHz Compatibile o Mac G3 o superiore

Microsoft Windows 2000/XP/Vista/7, Mac OS10.3 o superiore, Linux

Ed interfaccia USB 1.1, USB2.0 o USB3.0

Indice

| | |
|------------------------------|----|
| 1. Introduzione----- | 00 |
| 2. Caratteristiche ----- | 00 |
| 3. Contenuto----- | 00 |
| 4. Cenni Preliminari----- | 00 |
| 5. Utilizzo----- | 00 |
| 6. Funzione Clone ----- | 00 |
| 7. Funzione HDD Backup ----- | 00 |
| 8. Smaltimento----- | 00 |

1. Introduzione

Grazie per aver acquistato HDD duplicator di MEDIACOM. Il dispositivo con duplice alloggiamento per dischi SATA da 3.5" e 2.5" permette di utilizzare qualsiasi disco interno SATA come una comune periferica sterna o di salvare / duplicarne il contenuto in modo semplice ed efficace

Questa docking per HDD è il sistema più semplice, economico ed efficace per accedere ai vostri dischi SATA da 2.5" or 3.5". Basta semplicemente inserire i dischi nel loro alloggiamento e sarete pronti a trasferire, copiare o salvare files. HDD Duplicator offre la flessibilità di collegare 2 dischi SATA I & II al vostro computer attraverso la porta USB del vostro computer senza la necessità di aprirlo. The MEDIACOM HDD Duplicator è la soluzione perfetta per accedere ai vostri Hard disk in pochi secondi e trasferire dati ad elevatissima velocità grazie alla porta USB 3.0

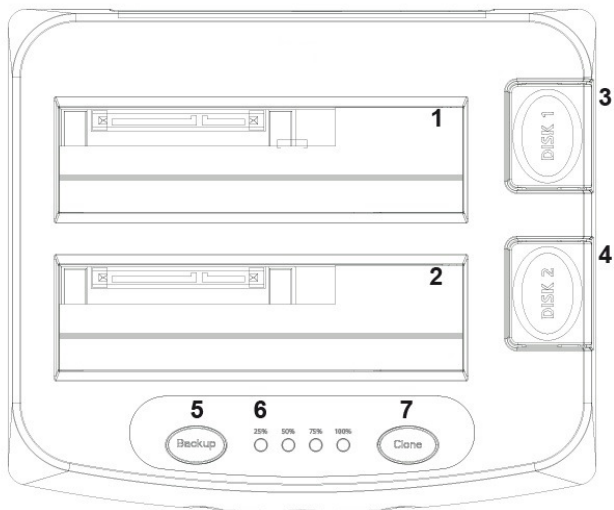
2. Caratteristiche

1. Supporta 2.5" & 3.5" SATA I/II HDD.
2. Supporta copie dirette one touch clone (senza computer).
3. Interfaccia USB3.0.
4. Easy installation, plug & play e hot-swappable.
5. Indicatori LED per monitoraggio progressione copie.

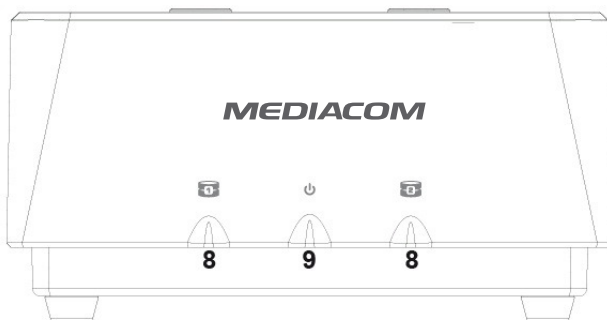
3. Contenuto

1. Docking Station
2. Power adaptor 12V 3A
3. Cavo USB 3.0
4. Manuale utente
5. CD con backup software

4. Cenni preliminari

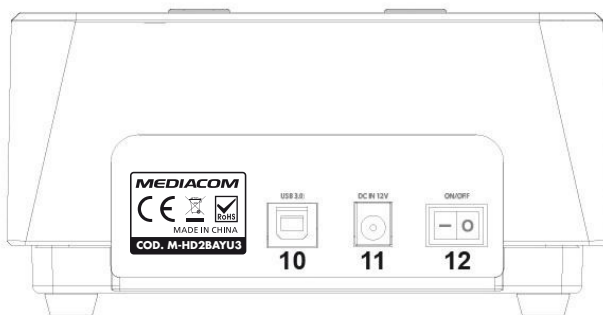


1. Slot per HDD1 (Sorgente in copy mode)
2. Slot per HDD2 (Destinazione in Copy mode)
3. Tasto rilascio per HDD1. Premere per scollegare l'HDD dalla porta SATA
4. Tasto rilascio per HDD2. Premere per scollegare l'HDD dalla porta SATA
5. Tasto Backup per avviamento funzione OTB
6. Indicatori LED di data transfer. Mostrano la progressione della copia.
7. Tasto Clone per avviamento copia Settore per Settore da HDD1 a HDD2



8. Indicatori LED relative al trasferimento dati HDD. Luce fissa per connessione, lampeggiante per data transfer.

9. LED Alimentazione



10. Porta USB 3.0 per connessione al PC

11. Connettore di alimentazione (trasformatore)

12. Tasto di accensione/spengimento

5. Utilizzo

For new hard drives, you need to format/partition them before using, or not, the system can't detect the drives correctly. Please refer to your hard drive manufacturer's documentation or check the HDD format information on the internet according to your operation system.

You will be required to use USB, which needs to be connected to the laptop or computer system. The operating system may need few seconds to detect the drives. Please follow below steps to install the drive.

1. Install your SATA hard drive properly to the SATA connector inside the docking station.
2. Connect the docking station to your computer by USB cable.
3. Connect the AC adapter to power on the dock.
4. The computer should detect the new drive. No driver is required.

6. Clone Dock function

To successfully use the clone function, the capacity of destination hard drive must be larger or equal to the source drive. Please note the source data can not be cloned to a drive with smaller capacity.

With this function, users can enjoy the one button clone (from source HDD to destination HDD) without connecting to computer.

Important Note:

1. Before doing hardware clone, please disconnect the USB cable that is between the dock and the computer. If the mentioned cables are connected during cloning process, they may cause corruption of the hard drives.

2. Please make sure you put the correct drive into correct drive bay before cloning, if not, the data will be damaged due to misuse.
3. The capacity of destination disk (should be put in the destination bay) must be equal or larger in capacity than the source disk. If Disk 2 is larger than Disk 1, e.g. Disk 1 has 250GB and Disk 2 has 750GB, after clone process has finished, there are 500GB unallocated at Disk 2, please use partition manager to allocate and format this part of Disk 2
4. The Clone function allows cloning the source hard disk including boot Sectors, datas, partitions and unallocated parts.
5. After cloning, the partition and data in destination drive will be completely replaced by those in source drive. So, in order to avoid unnecessary data loss at destination drive, be careful of using clone function.

Please follow below steps to enable the hardware clone :

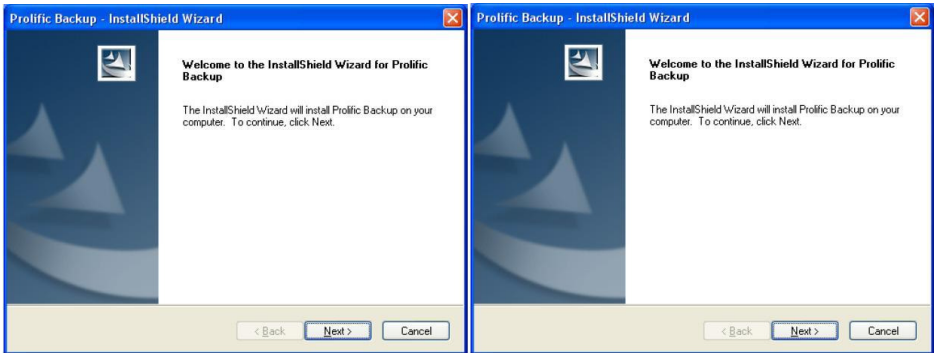
1. Install 2 hard drives into the dock. Make sure the drives are properly installed to source bay and destination bay.
2. Connect the AC adapter and click the power key to start up the device.
3. Press the **CLONE** key **around 3 seconds** to start the hard drive duplication when the 4 LED indicators are running (25% / 50% / 75% / 100%).
4. If you fail to hard drive duplication, you must restart the above process again.
5. Once the cloning process has reached 100%, all LEDs will not flash anymore but show static light which indicates the cloning task is finished.
6. Before removing the hard drive from the cloning dock, we strongly recommend that the dock is powered off and the power supply is

removed from the dock.

7. HDD Backup function

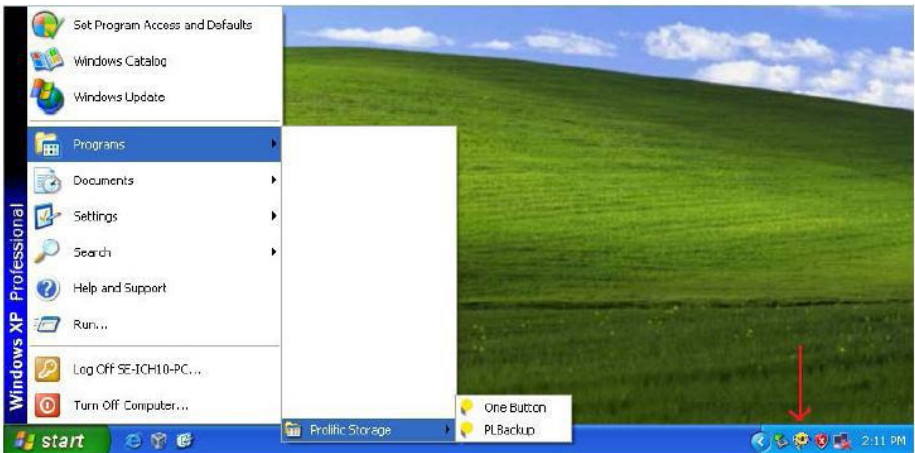
Installing Prolific Backup

To install Prolific Backup, simply run or double-click the “ProlificBackup.exe” installer program in Windows. Follow the instructions to finish the installation.

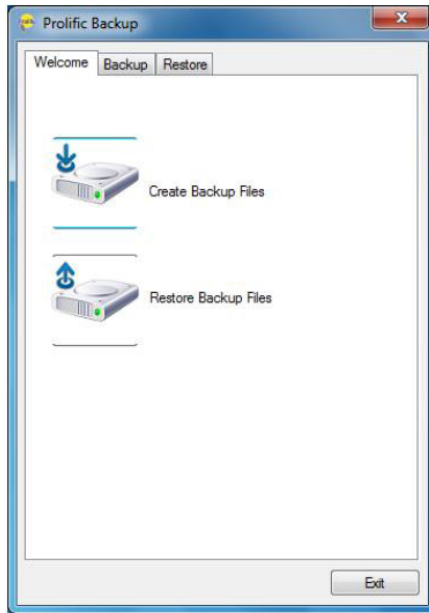


Running the Backup Files

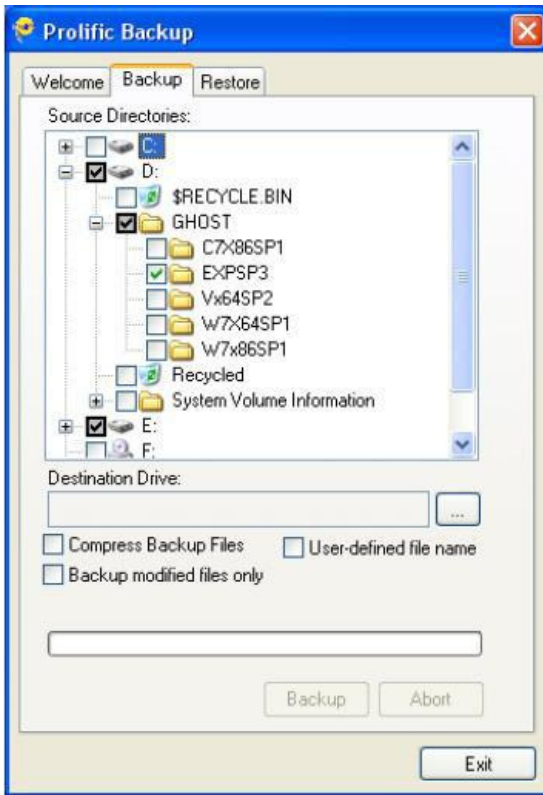
1. Launch the Prolific Backup software by double-clicking on the Prolific PL2X7X OneButton icon found on the system tray of your taskbar



2. The Prolific Backup software will then pop-out with two main options (Backup and Restore) on the Welcome folder. To create backup files, click on the Create Backup Files button or click the Backup folder tab.



3. The Backup menu folder consists of the Source Directories, the Destination Drive, and the backup option. Under the Source Directories, you can click the folder that you want to back up. Then on the Destination Drive, click the browse button to select the external drive. Then choose the way you want to back up the selected folders.



There are three ways to back up your files:

Copy exact files (default) – this will simply copy all the selected folders to your designated backup drive folder. You can also access these files directly from your backup drive. Backup files will be stored on a sub-folder called “**PL2X7X Backup**”.

Compress Backup Files – this option will compress all the backed up files. You will need to restore these files first in order to access them. Backup files will be stored on a sub-folder called “**PL2X7X Backup**”. If you also click the **User-defined file name** option, it will first prompt you for a specific filename and folder. You will need to restore these files first in

order to access them.

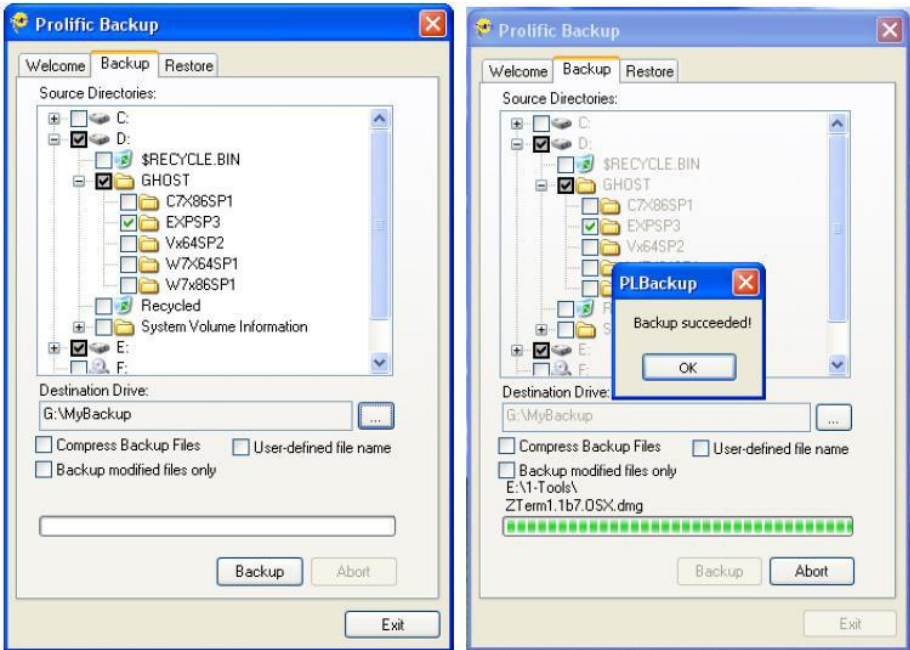
Backup modified files only – this option allows you to back up only those files that were modified since the last backup. Note that this option does not work on compressed backup files option. Backup files will be stored on a sub-folder called “**PL2X7X OnlyBackupModify**”.

The succeeding steps will show you how to do these three backup methods. Let us first select the default backup method.

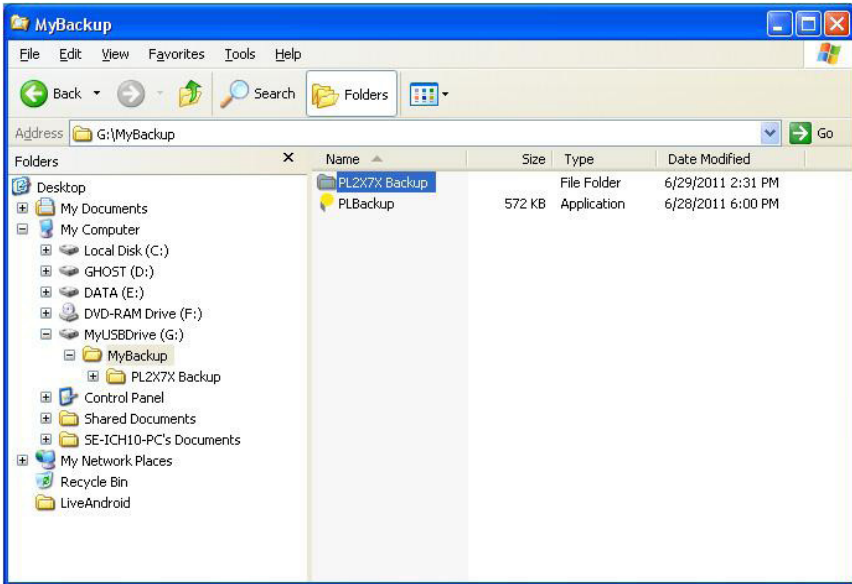
4. After you have selected the folders that you want to back up, click browse on the destination drive where you will save the backup files. It is recommended that you make a new folder to store all your backup files.



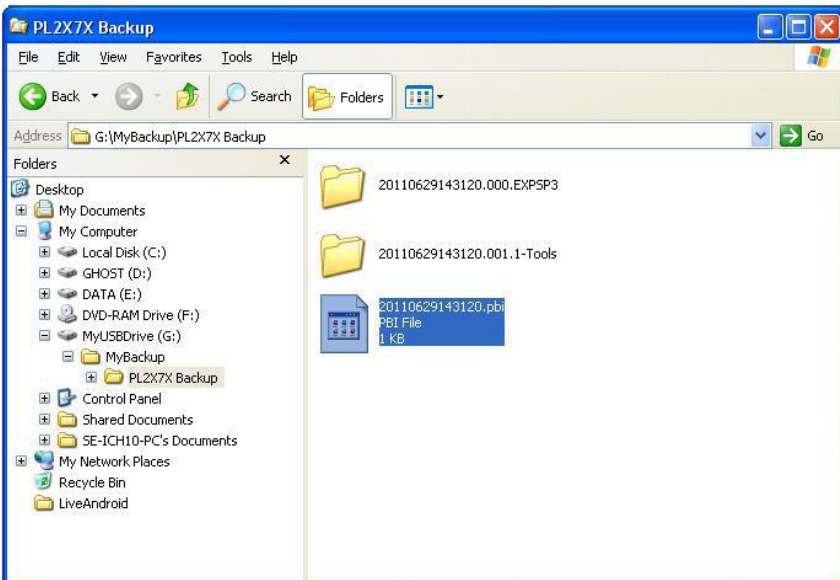
5. After you have selected the destination drive and folder, click on the Backup button to do a default backup operation. The backup operation will start and will show you the files being backed up as well as a status progress bar. After all files selected were backed up, a pop-up message will appear to inform you that backup is complete and successful. Click OK to finish.



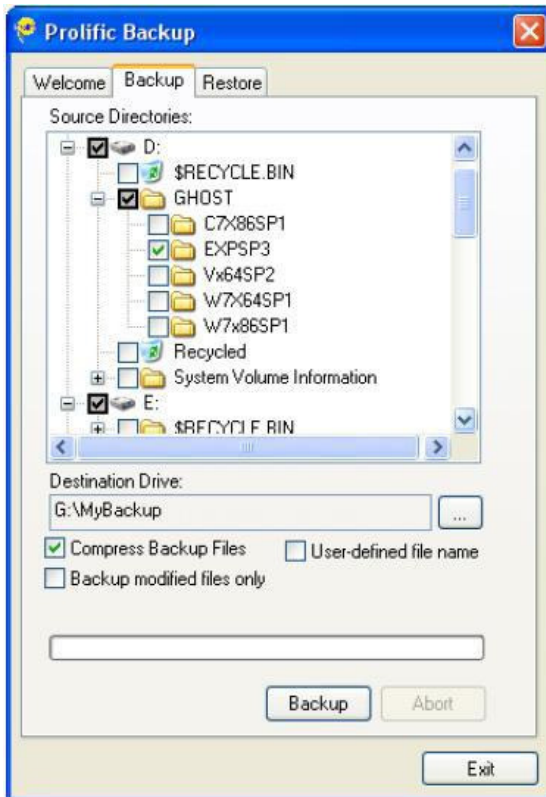
6. Go to your USB storage drive and check the backup files. A small utility program called PLBackup is also added into the backup folder so you can execute it if the drive is plug into another PC which does not have the Prolific Backup software installed. You will also see a sub-folder “**PL2X7X Backup**” where the backup files are stored.



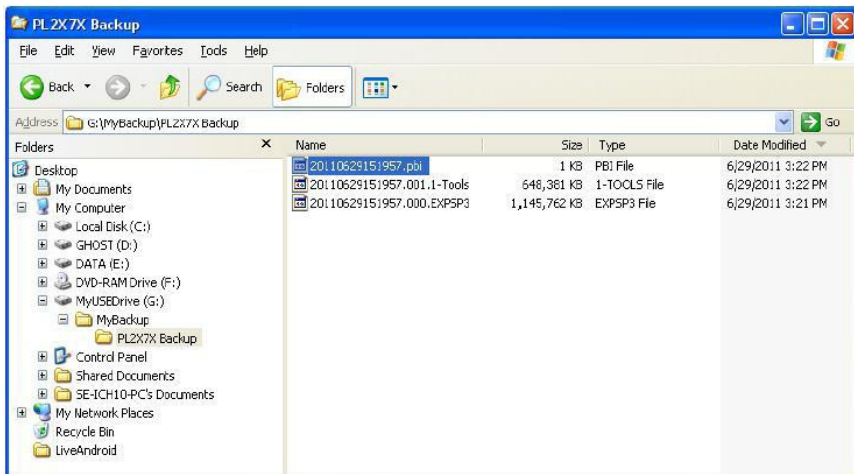
7. Inside the sub-folder “**PL2X7X Backup**”, you will find the folders that were copied with a date-time prefix added on the folder name. You will also see an associated “.pbi” file that is used to identify the backup folders to restore those folders. Please do not delete this .pbi file.



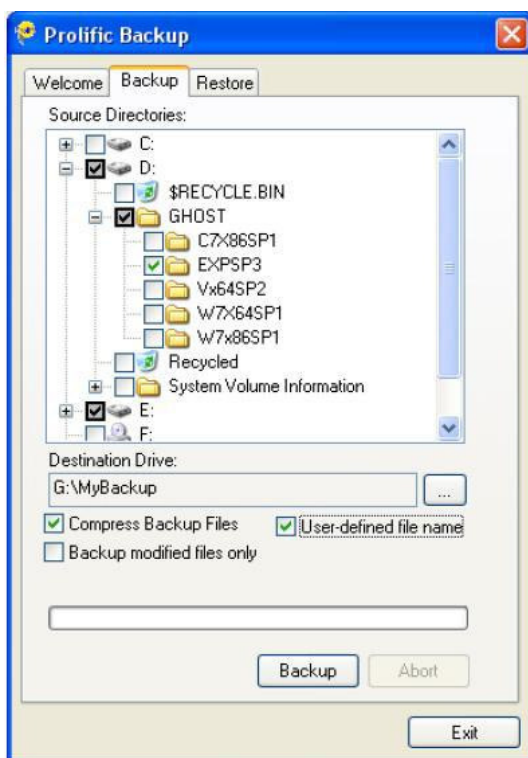
8. The second backup option is to use the “**Compress Backup files**” which you can choose to back up your files to a compressed file format for added protection. This will not prevent others from accessing your backup files directly from your external drive without first restoring the files. Click on the “**Compress Backup Files**” option and click Backup to start.



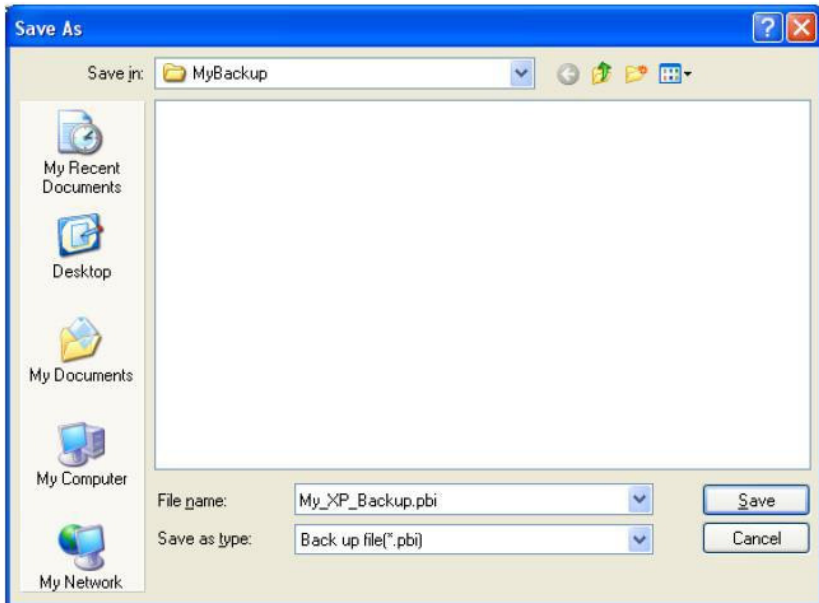
9. When backup is complete, the compressed backup files will be stored on the sub-folder “**PL2X7X Backup**”. Note that each selected folder is compressed separately with a date-time-folder name prefix used as a file name. Note again the associated “.pbi” file that you need to refer to restore these files.



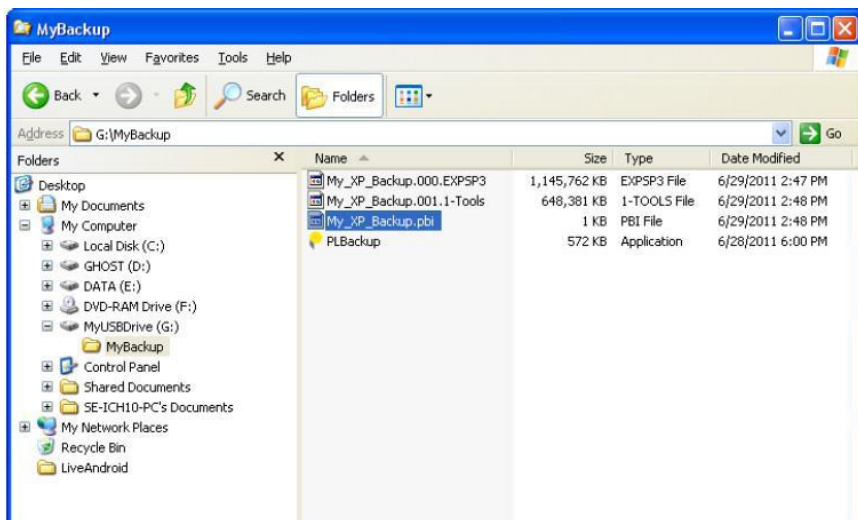
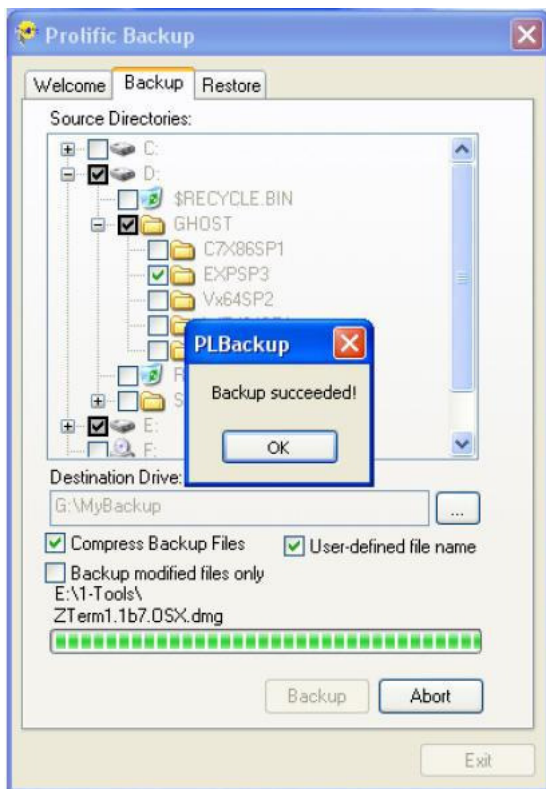
10. For the “Compress Backup Files” option, you can also choose to click the “**User-define filename**” option to specify your own filename and folder.



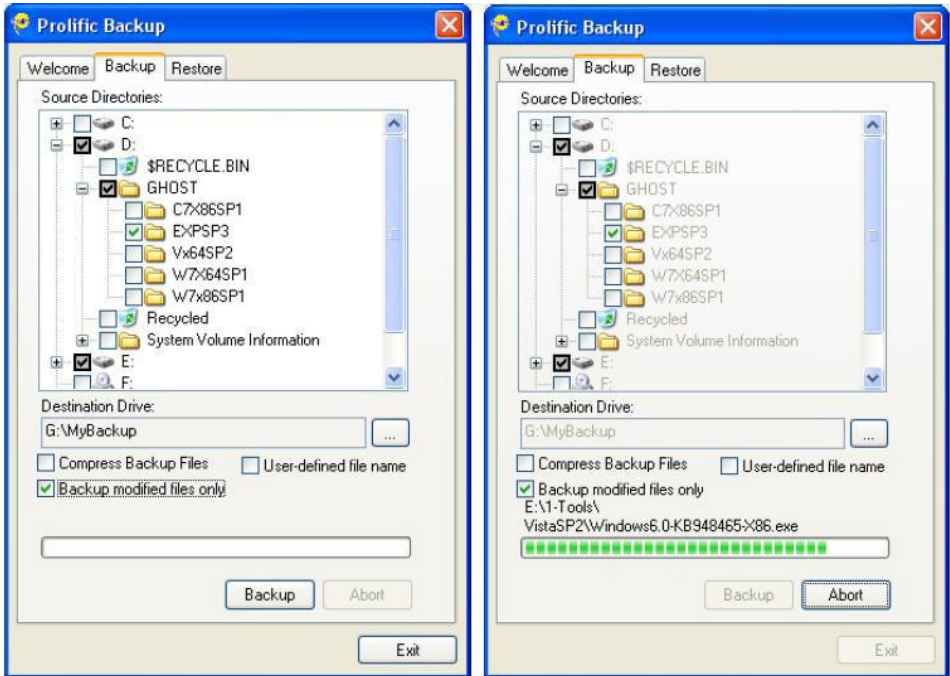
11. When you click on the Backup button, it will first prompt you for the filename to be used for the compressed backup files and the folder directory to store the files. Click the Save button to begin backup.



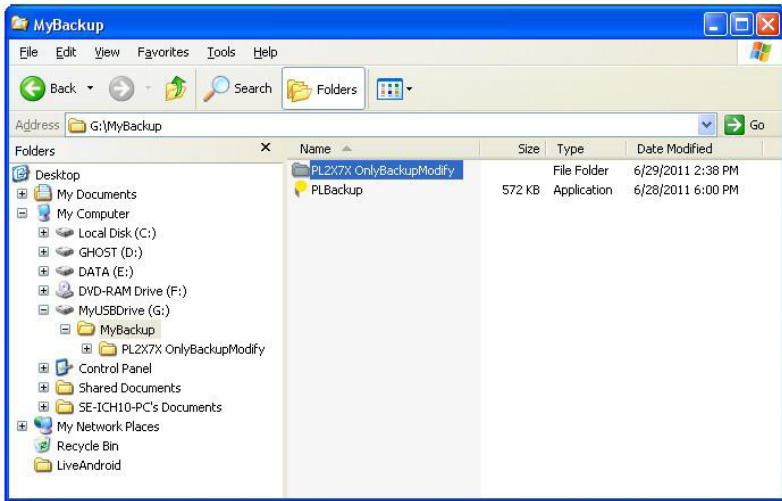
12. When backup is complete, the compressed backup files will be stored on the folder you specified. It also uses the filename you specified. Note that each selected folder is compressed separately with the specified filename used as a prefix. Note again the associated “.pbi” file using your specified filename that you need to refer to restore these files.



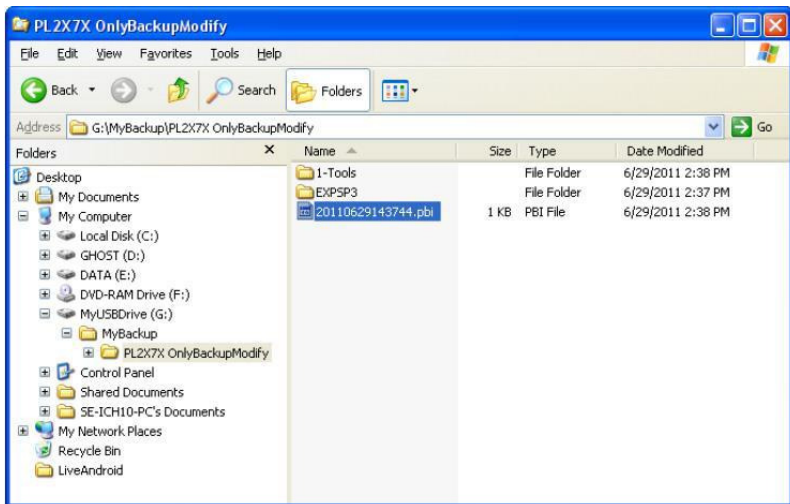
13. Lastly you can choose to use the “**Backup modified files only**” option. This lets you save more time by just backing up those files on the folders that were modified from your previous backup. For first-time backup, it will need to do a full backup of the selected folders in a special backup folder in order to compare the files. Click Backup button to start.



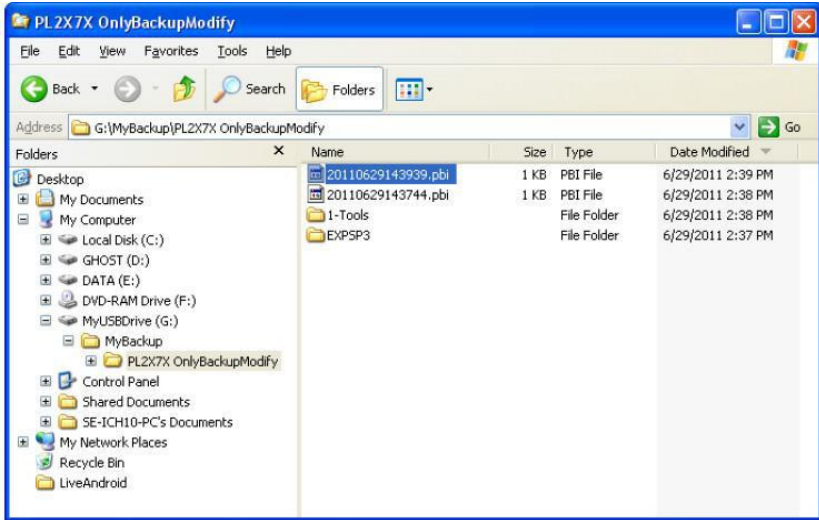
14. Notice that a new sub-folder “**PL2X7X OnlyBackupModify**” was created and here is where the backup files are stored. The next time you do a backup; it will compare the files and only backup files that are modified.



15. Inside the sub-folder “**PL2X7X OnlyBackupModify**”, you will find the selected folders that were copied. You will also see an associated “.pbi” file that will be used to identify the backup folders to restore those folders. It is important that you do not delete this .pbi file. You will need to point to this file/folder when running the restore operation.



16. The next time you backup your files, the folder where the files are stored will just update with those files that were modified. Note that a new .pbi file will be created each time you do a backup. Always use the latest .pbi file to restore the files.



One Touch Button Backup Control

The M-HD2BAYU3 comes with a one touch backup button which will call the prolific Backup software and instantly do backup file operation based on the settings made before



INFORMATIVA SMALTIMENTO

Ai sensi dell'art. 13 del Decreto Legislativo 25 luglio 2005, n. 151" Attuazione delle Direttive 2002/95/CE, 2002/96/CE, relativa alla riduzione dell'uso di sostanze pericolose nelle apparecchiature elettriche ed elettroniche, nonché allo smaltimento dei rifiuti.

Il simbolo del cassonetto barrato riportato sull'apparecchiatura o sulla confezione indica che il prodotto alla fine della propria vita utile deve essere raccolto separatamente dagli altri rifiuti.

L'utente dovrà, pertanto, conferire l'apparecchiatura giunta a fine vita agli idonei centri di raccolta differenziata dei rifiuti elettronici ed elettrotecnici, oppure riconsegnarla al rivenditore al momento dell'acquisto di una nuova apparecchiatura di tipo equivalente, in ragione di uno ad uno.

L'adeguata raccolta differenziata per l'avvio successivo dell'apparecchiatura dimessa al riciclaggio, al trattamento e allo smaltimento ambientalmente compatibile contribuisce ad evitare possibili effetti negativi sull'ambiente e sulla salute e favorisce il reimpiego e/o riciclo dei materiali di cui è composta l'apparecchiatura.

Lo smaltimento abusivo del prodotto da parte dell'utente comporta l'applicazione delle sanzioni amministrative previste dalla normativa vigente.